

REV	DATE	DESCRIPTION	DR	CH



Warmup

The world's **best-selling** floor heating brand™

WARMUP PLC, 704 Tudor Estate, Abbey Road, London, NW10 7UW
 Tel 0845 034 8270 Fax 0208 453 6869
cad@warmup.com projects@warmup.com www.warmup.co.uk

DRAWING ISSUE STATUS		DRAWING NO
CONSTRUCTION		09
PROJECT		
TECTORA JOISTED BATTEN FLOOR SYSTEM		
TIMBER SUBFLOOR		
TITLE		
GENERIC TEMPLATE		
DETAILED SECTION		
PROJECT MANAGER	DRAWN	CHECKED
	AA	AW
DATE	SCALE	REVISION
01.03.2017	1:50@A3	
CAD FILE		
20170228-H-TECTORA-DET SECTIONS.DWG		

WARMUP TECTORA JOISTED BATTEN FLOOR SYSTEM. Timber subfloor. Generic template

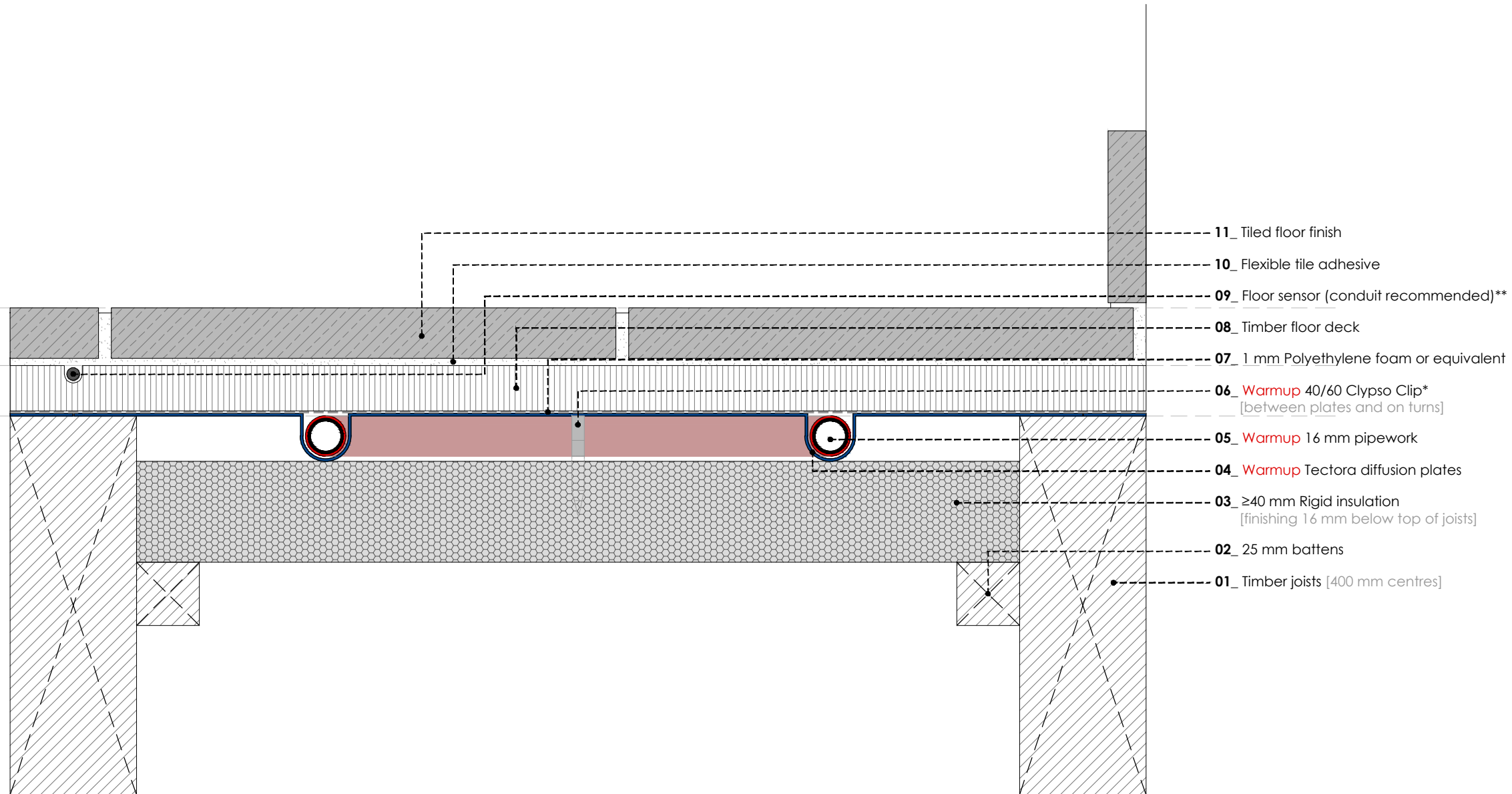
* Pipes need to be clipped to the insulation on turns

** Channel a groove in the floor deck to allow for floor sensor installation

© This drawing is confidential and may not be used, copied or disclosed to anyone without permission of Warmup Plc. The Copyright of these drawings remain the property of Warmup Plc.

Do not scale from drawings, all dimensions to be checked on site.

The Warmup word and associated logos are trade marks. © Warmup Plc. 2010 - Regd. TM Nos. 1257757, 4409926, 5265707. E & OE. Registered in England No. 2955213.



REV	DATE	DESCRIPTION	DR	CH



Warmup

The world's **best-selling** floor heating brand™

WARMUP PLC, 704 Tudor Estate, Abbey Road, London, NW10 7UW
 Tel 0845 034 8270 Fax 0208 453 6869
cad@warmup.com projects@warmup.com www.warmup.co.uk

DRAWING ISSUE STATUS		DRAWING NO
CONSTRUCTION		10
PROJECT		
TECTORA JOISTED BATTEN FLOOR SYSTEM		
TIMBER SUBFLOOR		
TITLE		
TILED FLOOR		
DETAILED SECTION		
PROJECT MANAGER	DRAWN	CHECKED
	AA	AW
DATE	SCALE	REVISION
01.03.2017	1:50@A3	
CAD FILE		
20170228-H-TECTORA-DET SECTIONS.DWG		

WARMUP TECTORA JOISTED BATTEN FLOOR SYSTEM. Timber subfloor. Tiled floor

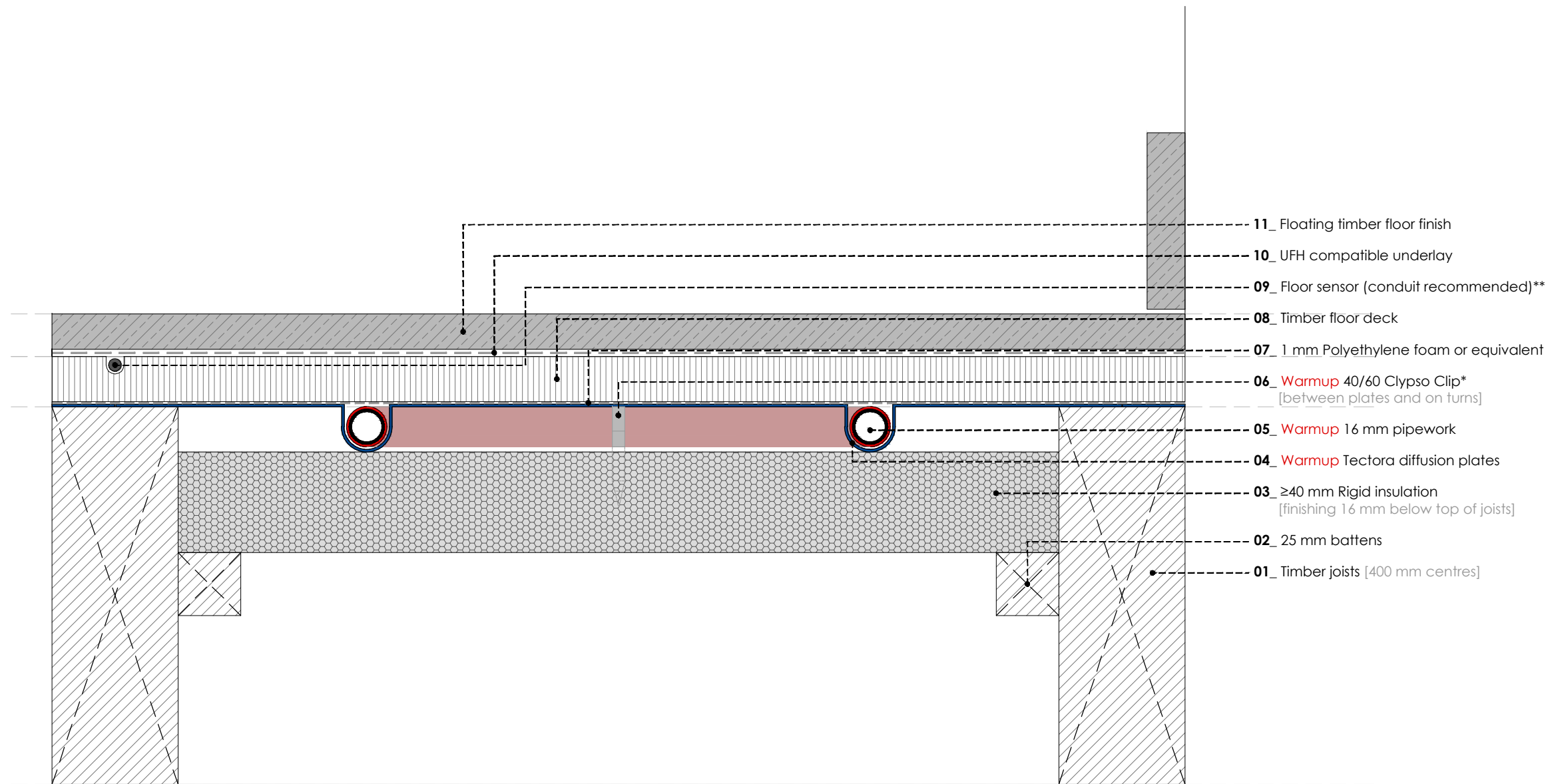
* Pipes need to be clipped to the insulation on turns

** Channel a groove in the floor deck to allow for floor sensor installation

© This drawing is confidential and may not be used, copied or disclosed to anyone without permission of Warmup Plc. The Copyright of these drawings remain the property of Warmup Plc.

Do not scale from drawings, all dimensions to be checked on site.

The Warmup word and associated logos are trade marks. © Warmup Plc. 2010 - Regd. TM Nos. 1257757, 4409926, 5265707. E & OE. Registered in England No. 2955213.



- 11_ Floating timber floor finish
- 10_ UFH compatible underlay
- 09_ Floor sensor (conduit recommended)**
- 08_ Timber floor deck
- 07_ 1 mm Polyethylene foam or equivalent
- 06_ Warmup 40/60 Clypso Clip*
[between plates and on turns]
- 05_ Warmup 16 mm pipework
- 04_ Warmup Tectora diffusion plates
- 03_ ≥40 mm Rigid insulation
[finishing 16 mm below top of joists]
- 02_ 25 mm battens
- 01_ Timber joists [400 mm centres]

REV	DATE	DESCRIPTION	DR	CH



Warmup

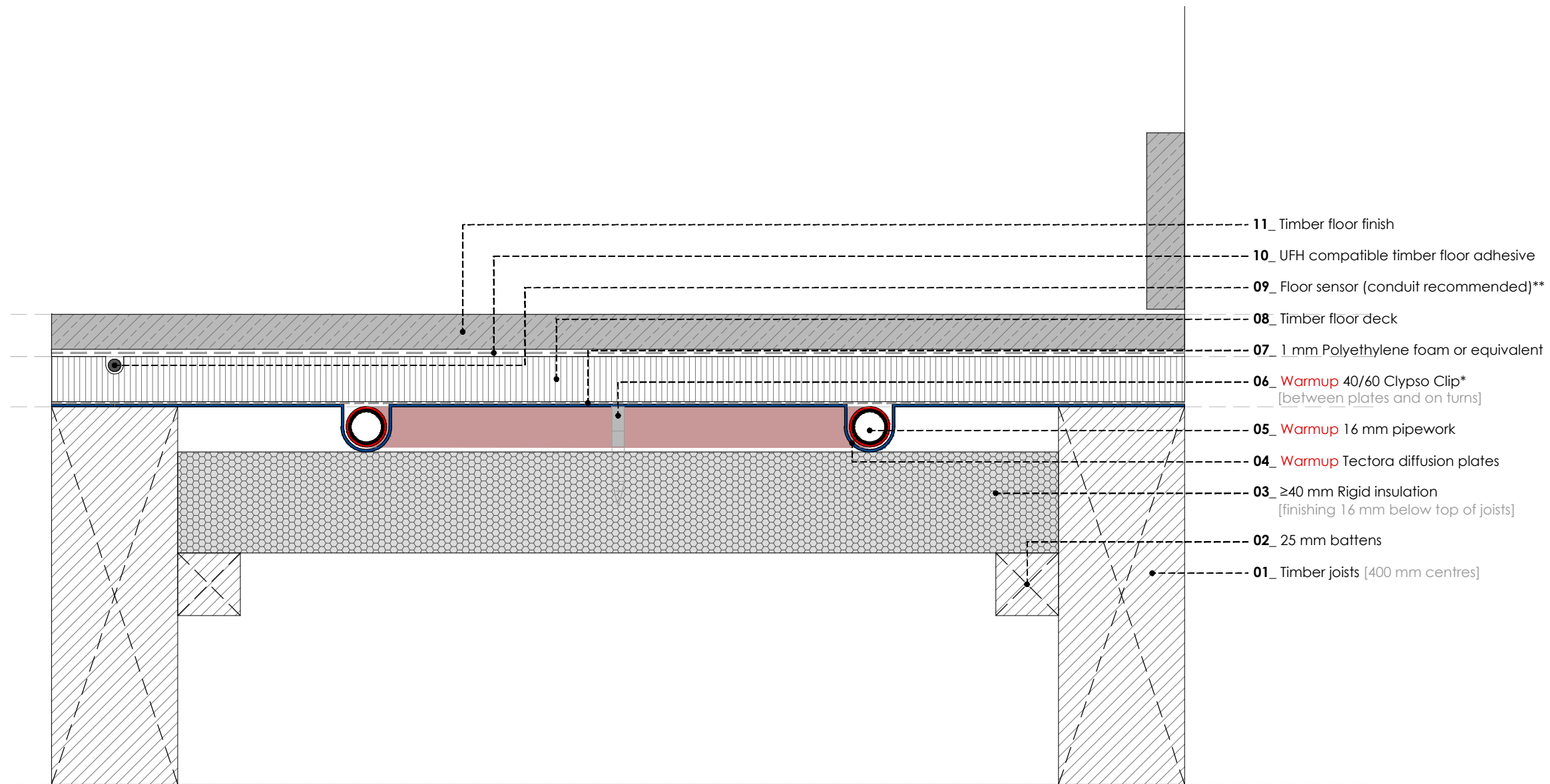
The world's **best-selling** floor heating brand™

WARMUP PLC, 704 Tudor Estate, Abbey Road, London, NW10 7UW
Tel 0845 034 8270 Fax 0208 453 6869
cad@warmup.com projects@warmup.com www.warmup.co.uk

DRAWING ISSUE STATUS		DRAWING NO
CONSTRUCTION		11
PROJECT		
TECTORA JOISTED BATTEN FLOOR SYSTEM		
TIMBER SUBFLOOR		
TITLE		
WOOD / LAMINATE FLOOR - FLOATING		
DETAILED SECTION		
PROJECT MANAGER	DRAWN	CHECKED
	AA	AW
DATE	SCALE	REVISION
01.03.2017	1:50@A3	
CAD FILE		
20170228-H-TECTORA-DET SECTIONS.DWG		

WARMUP TECTORA JOISTED BATTEN FLOOR SYSTEM. Timber subfloor. Wood / Laminate Floor - floating

* Pipes need to be clipped to the insulation on turns
** Channel a groove in the floor deck to allow for floor sensor installation



REV	DATE	DESCRIPTION	DR	CH



Warmup

The world's **best-selling** floor heating brand™

WARMUP PLC, 704 Tudor Estate, Abbey Road, London, NW10 7UW
 Tel 0845 034 8270 Fax 0208 453 6869
cad@warmup.com projects@warmup.com www.warmup.co.uk

DRAWING ISSUE STATUS		DRAWING NO
CONSTRUCTION		12
PROJECT		
TECTORA JOISTED BATTEN FLOOR SYSTEM		
TIMBER SUBFLOOR		
TITLE		
WOOD / LAMINATE FLOOR - GLUED		
DETAILED SECTION		
PROJECT MANAGER	DRAWN	CHECKED
	AA	AW
DATE	SCALE	REVISION
01.03.2017	1:50@A3	
CAD FILE		
20170228-H-TECTORA-DET SECTIONS.DWG		

WARMUP TECTORA JOISTED BATTEN FLOOR SYSTEM. Timber subfloor. Wood / Laminate Floor - glued

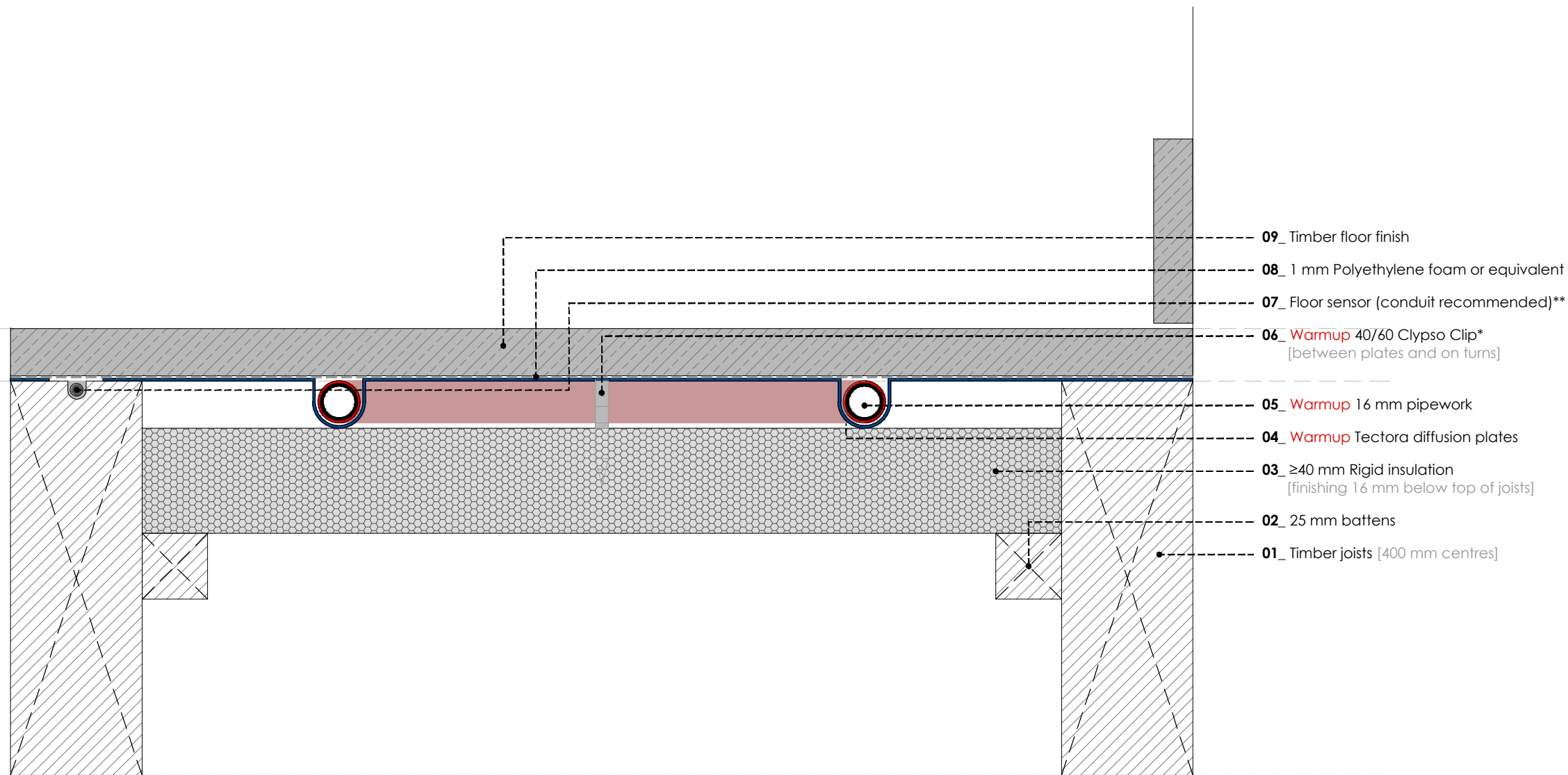
* Pipes need to be clipped to the insulation on turns

** Channel a groove in the floor deck to allow for floor sensor installation

© This drawing is confidential and may not be used, copied or disclosed to anyone without permission of Warmup Plc. The Copyright of these drawings remain the property of Warmup Plc.

Do not scale from drawings, all dimensions to be checked on site.

The Warmup word and associated logos are trade marks. © Warmup Plc. 2010 - Regd. TM Nos. 1257757, 4409926, 5265707. E & OE. Registered in England No. 2955213.



- 09_ Timber floor finish
- 08_ 1 mm Polyethylene foam or equivalent
- 07_ Floor sensor (conduit recommended)**
- 06_ Warmup 40/60 Clypso Clip*
[between plates and on turns]
- 05_ Warmup 16 mm pipework
- 04_ Warmup Tectora diffusion plates
- 03_ ≥40 mm Rigid insulation
[finishing 16 mm below top of joists]
- 02_ 25 mm battens
- 01_ Timber joists [400 mm centres]

REV	DATE	DESCRIPTION	DR	CH



Warmup

The world's **best-selling** floor heating brand™

WARMUP PLC, 704 Tudor Estate, Abbey Road, London, NW10 7UW
Tel 0845 034 8270 Fax 0208 453 6869
cad@warmup.com projects@warmup.com www.warmup.co.uk

DRAWING ISSUE STATUS		DRAWING NO
CONSTRUCTION		13
PROJECT		
TECTORA JOISTED BATTEN FLOOR SYSTEM		
TIMBER SUBFLOOR		
TITLE		
WOOD/LAMINATE FLOOR-SCREWED/NAILED		
DETAILED SECTION		
PROJECT MANAGER	DRAWN	CHECKED
	AA	AW
DATE	SCALE	REVISION
01.03.2017	1:50@A3	
CAD FILE		
20170228-H-TECTORA-DET SECTIONS.DWG		

WARMUP TECTORA JOISTED BATTEN FLOOR SYSTEM. Timber subfloor. Wood / Laminate Floor - screwed / nailed

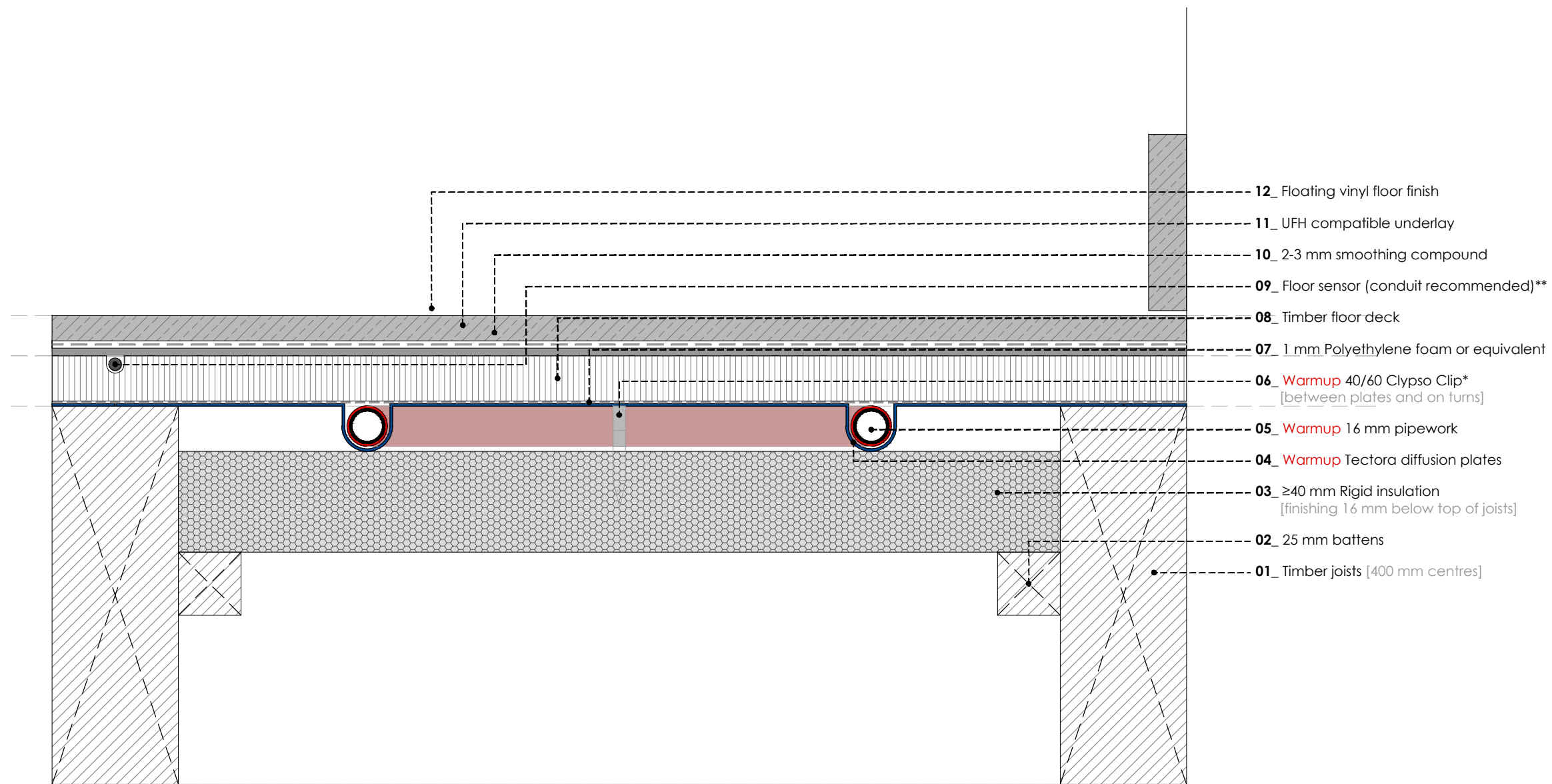
* Pipes need to be clipped to the insulation on turns

** Floor sensor should be placed in a notch, filled with caulk/adhesive, in the batten with the diffuser plate trimmed back 10-15mm.

© This drawing is confidential and may not be used, copied or disclosed to anyone without permission of Warmup Plc. The Copyright of these drawings remain the property of Warmup Plc.

Do not scale from drawings, all dimensions to be checked on site.

The Warmup word and associated logos are trade marks. © Warmup Plc. 2010 - Regd. TM Nos. 1257757, 4409926, 5265707. E & OE. Registered in England No. 2955213.



REV	DATE	DESCRIPTION	DR	CH



Warmup

The world's **best-selling** floor heating brand™

WARMUP PLC, 704 Tudor Estate, Abbey Road, London, NW10 7UW
 Tel 0845 034 8270 Fax 0208 453 6869
cad@warmup.com projects@warmup.com www.warmup.co.uk

DRAWING ISSUE STATUS		DRAWING NO
CONSTRUCTION		14
PROJECT		
TECTORA JOISTED BATTEN FLOOR SYSTEM		
TIMBER SUBFLOOR		
TITLE		
VINYL FLOOR - FLOATING		
DETAILED SECTION		
PROJECT MANAGER	DRAWN	CHECKED
	AA	AW
DATE	SCALE	REVISION
01.03.2017	1:50@A3	
CAD FILE		
20170228-H-TECTORA-DET SECTIONS.DWG		

WARMUP TECTORA JOISTED BATTEN FLOOR SYSTEM. Timber subfloor. Vinyl Floor - floating

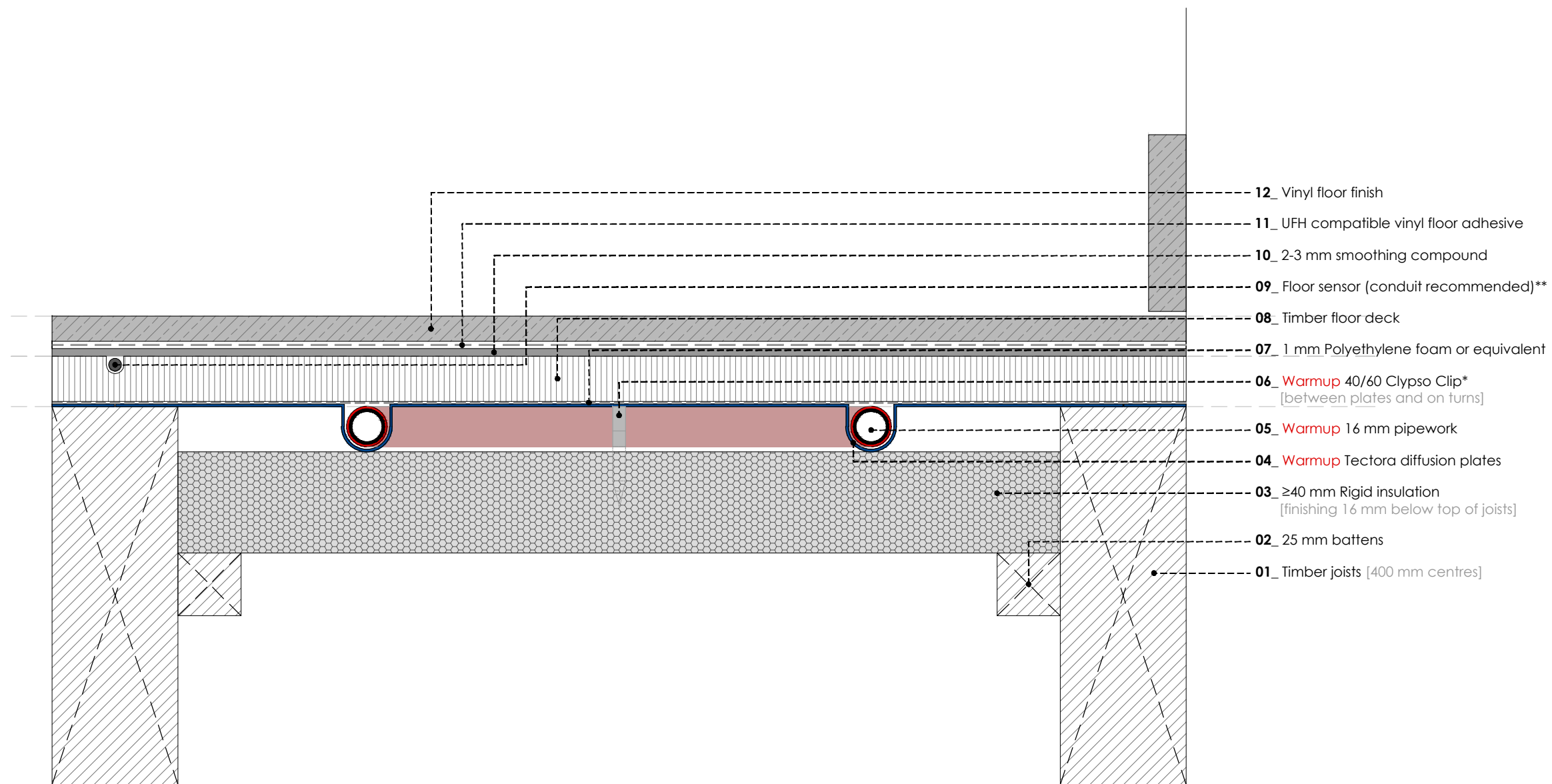
* Pipes need to be clipped to the insulation on turns

** Channel a groove in the floor deck to allow for floor sensor installation

© This drawing is confidential and may not be used, copied or disclosed to anyone without permission of Warmup Plc. The Copyright of these drawings remain the property of Warmup Plc.

Do not scale from drawings, all dimensions to be checked on site.

The Warmup word and associated logos are trade marks. © Warmup Plc. 2010 - Regd. TM Nos. 1257757, 4409926, 5265707. E & OE. Registered in England No. 2955213.



REV	DATE	DESCRIPTION	DR	CH



Warmup

The world's **best-selling** floor heating brand™

WARMUP PLC, 704 Tudor Estate, Abbey Road, London, NW10 7UW
 Tel 0845 034 8270 Fax 0208 453 6869
cad@warmup.com projects@warmup.com www.warmup.co.uk

DRAWING ISSUE STATUS		DRAWING NO
CONSTRUCTION		15
PROJECT		
TECTORA JOISTED BATTEN FLOOR SYSTEM		
TIMBER SUBFLOOR		
TITLE		
VINYL FLOOR - GLUED		
DETAILED SECTION		
PROJECT MANAGER	DRAWN	CHECKED
	AA	AW
DATE	SCALE	REVISION
01.03.2017	1:50@A3	
CAD FILE		
20170228-H-TECTORA-DET SECTIONS.DWG		

WARMUP TECTORA JOISTED BATTEN FLOOR SYSTEM. Timber subfloor. Vinyl Floor - glued

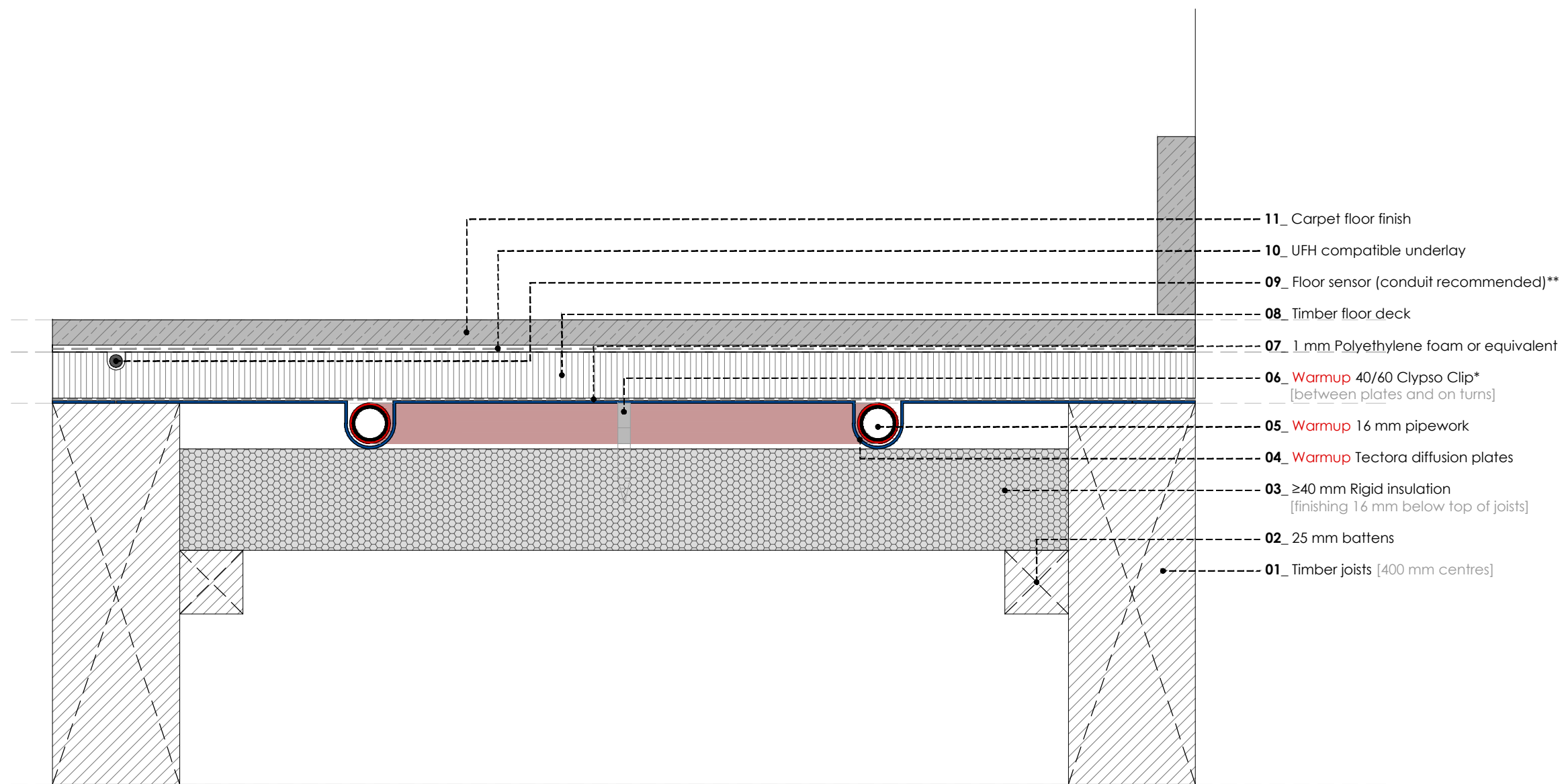
* Pipes need to be clipped to the insulation on turns

** Channel a groove in the floor deck to allow for floor sensor installation

© This drawing is confidential and may not be used, copied or disclosed to anyone without permission of Warmup Plc. The Copyright of these drawings remain the property of Warmup Plc.

Do not scale from drawings, all dimensions to be checked on site.

The Warmup word and associated logos are trade marks. © Warmup Plc. 2010 - Regd. TM Nos. 1257757, 4409926, 5265707. E & OE. Registered in England No. 2955213.



- 11_ Carpet floor finish
- 10_ UFH compatible underlay
- 09_ Floor sensor (conduit recommended)**
- 08_ Timber floor deck
- 07_ 1 mm Polyethylene foam or equivalent
- 06_ Warmup 40/60 Clypso Clip*
[between plates and on turns]
- 05_ Warmup 16 mm pipework
- 04_ Warmup Tectora diffusion plates
- 03_ ≥40 mm Rigid insulation
[finishing 16 mm below top of joists]
- 02_ 25 mm battens
- 01_ Timber joists [400 mm centres]

REV	DATE	DESCRIPTION	DR	CH



Warmup

The world's **best-selling** floor heating brand™

WARMUP PLC, 704 Tudor Estate, Abbey Road, London, NW10 7UW
Tel 0845 034 8270 Fax 0208 453 6869
cad@warmup.com projects@warmup.com www.warmup.co.uk

DRAWING ISSUE STATUS		DRAWING NO
CONSTRUCTION		16
PROJECT		
TECTORA JOISTED BATTEN FLOOR SYSTEM		
TIMBER SUBFLOOR		
TITLE		
CARPET FLOOR		
DETAILED SECTION		
PROJECT MANAGER	DRAWN	CHECKED
	AA	AW
DATE	SCALE	REVISION
01.03.2017	1:50@A3	
CAD FILE		
20170228-H-TECTORA-DET SECTIONS.DWG		

WARMUP TECTORA JOISTED BATTEN FLOOR SYSTEM. Timber subfloor. Carpet Floor

- * Pipes need to be clipped to the insulation on turns
- ** Channel a groove in the floor deck to allow for floor sensor installation

© This drawing is confidential and may not be used, copied or disclosed to anyone without permission of Warmup Plc. The Copyright of these drawings remain the property of Warmup Plc.

Do not scale from drawings, all dimensions to be checked on site.

The Warmup word and associated logos are trade marks. © Warmup Plc. 2010 - Regd. TM Nos. 1257757, 4409926, 5265707. E & OE. Registered in England No. 2955213.