







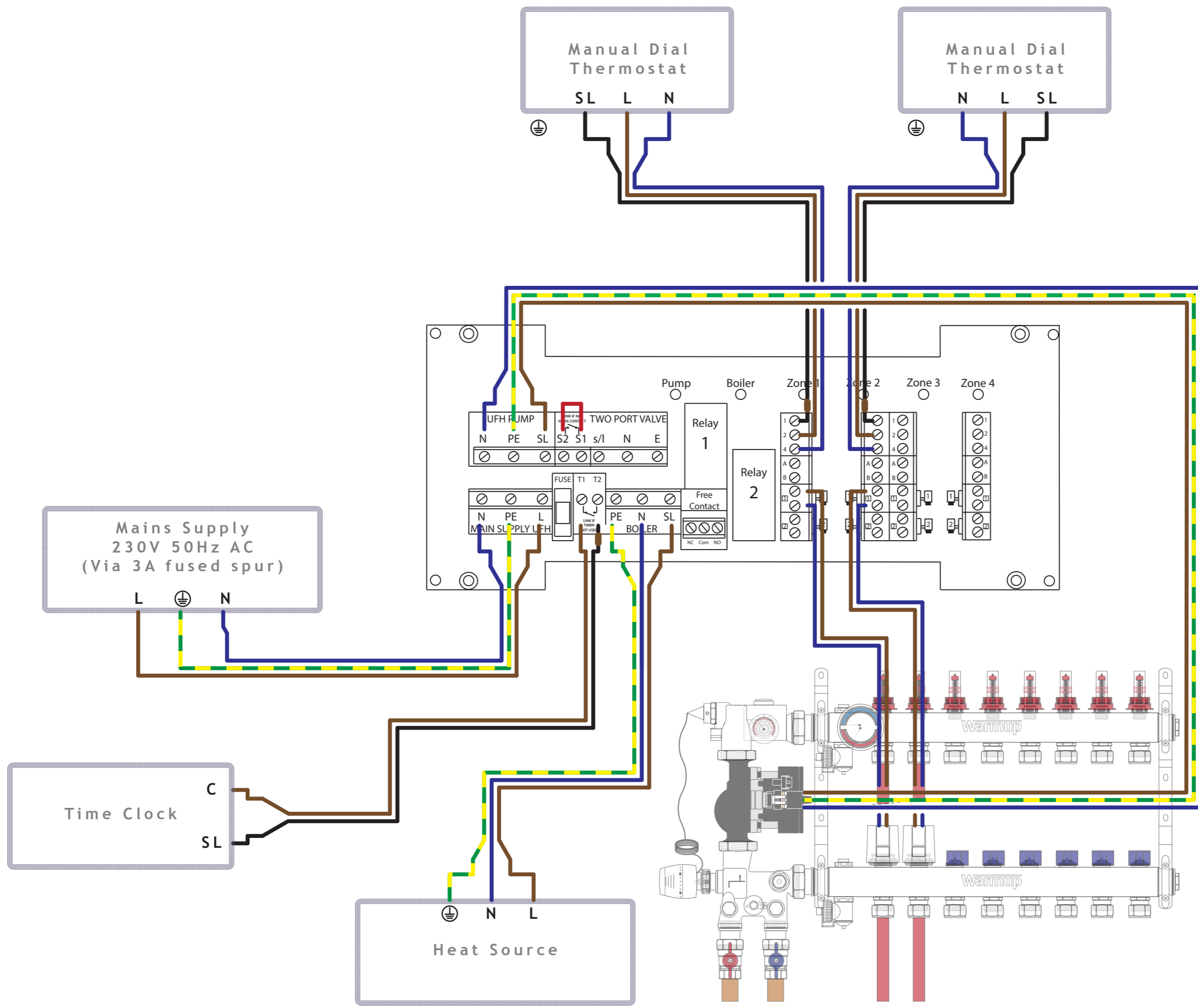


WIRING DIAGRAM LEGEND		
	Live	L
	Earth	E 
	Neutral	N
	Switched Live	SL
	Switched Live	SL
	Common	C
	Link Wire	



# Warmup

The world's best-selling floor heating brand™  
**WARMUP PLC**, 702 & 704 Tudor Estate, Abbey Road, London, NW10 7UW  
 Tel 0345 034 2288 Fax 0203 453 2299  
[support@warmup.com](mailto:support@warmup.com) [www.warmup.co.uk](http://www.warmup.co.uk)

<b>TITLE</b>		
Wiring Diagram		
<b>WHS-C-B-MASTER01 Time Clock</b>		
<b>DATE</b>	<b>DRAWN</b>	<b>REVISION</b>
07.02.2017	GW	A
<b>PDF FILE</b>		
Warmup - WD - WHS-C-B-MASTER01 (Time Clock) - 2017-02-07.pdf		
Any electrical works undertaken should be completed by a suitable qualified competent electrician.		
Any interconnecting electrical components that form part of a hydronic system should be connected to a 3A power supply, with the whole system having a single point of isolation.		
The Warmup word and associated logos are trade marks. © Warmup Plc. 2010 - Regd. TM Nos. 1257757, 4409926, 5265707. E & OE. Registered in England No. 2955213.		
All products must be earthed in accordance with current wiring regulations. <b>Some earth connections have been omitted for clarity.</b>		